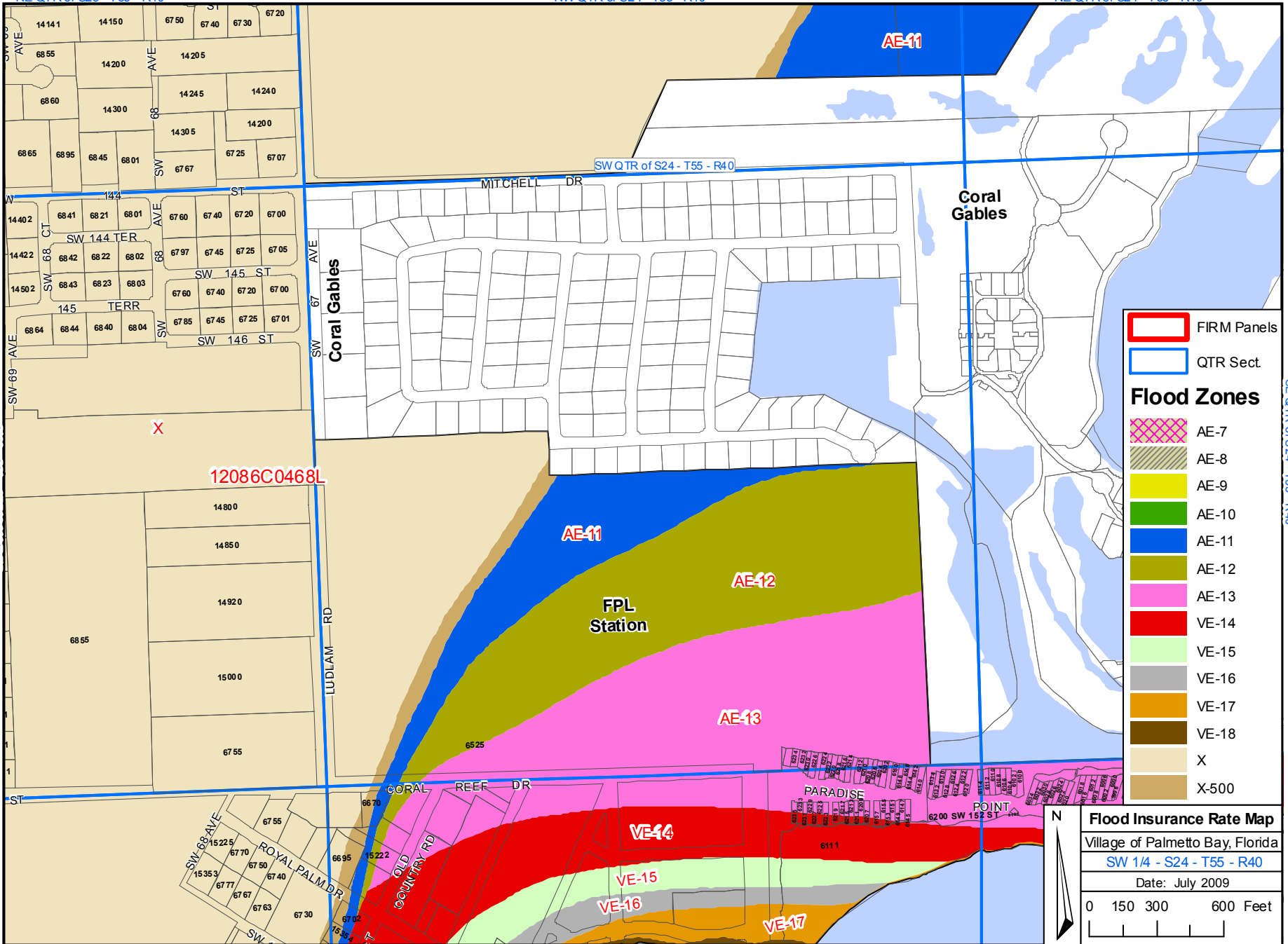


NE QTR of S23 - T55 - R40

NW QTR of S24 - T55 - R40

NE QTR of S24 - T55 - R40



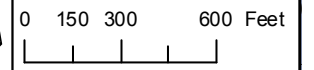
- | | FIRM Panels |
|-------------|-------------|
| | QTR Sect. |
| Flood Zones | |
| | AE-7 |
| | AE-8 |
| | AE-9 |
| | AE-10 |
| | AE-11 |
| | AE-12 |
| | AE-13 |
| | VE-14 |
| | VE-15 |
| | VE-16 |
| | VE-17 |
| | VE-18 |
| | X |
| | X-500 |



Flood Insurance Rate Map
 Village of Palmetto Bay, Florida

SW 1/4 - S24 - T55 - R40

Date: July 2009



NE QTR of S26 - T55 - R40

NW QTR of S25 - T55 - R40

NE QTR of S25 - T55 - R40

SE QTR of S23 - T55 - R40

SE QTR of S24 - T55 - R40

12086C0468L

AE-11

AE-12

AE-13

VE-14

VE-15

VE-16

VE-17

Coral Gables

FPL Station

X

CORAL REEF DR

PARADISE

POINT

14141 14150 6750 6740 6730 6720
 6855 14200 14205
 6860 14245 14240
 14300 14200
 6865 6895 6845 6801 14305 6725 6707
 6767
 1422
 14402 6841 6821 6801 6760 6740 6720 6700
 6842 6822 6802 6797 6745 6725 6705
 14422 6843 6823 6803 SW 144 TERR
 14502 SW 68 CT SW 68 AVE 6760 6740 6720 6700
 6864 6844 6840 6804 SW 145 ST
 6785 6745 6725 6701
 SW 146 ST
 14800
 14850
 14920
 6855
 15000
 6755

1442
 14402 6841 6821 6801 6760 6740 6720 6700
 14422 6842 6822 6802 6797 6745 6725 6705
 14502 6843 6823 6803 SW 144 TERR
 6864 6844 6840 6804 SW 145 ST
 6785 6745 6725 6701
 SW 146 ST

6755 6670 6670
 15225 6770 6750 6740 6730
 15353 6771 6767 6763 6730
 6695 15222
 15354 6702
 15354 6702
 6702 6702 6702

SW 69 AVE
 1422
 14402 6841 6821 6801 6760 6740 6720 6700
 14422 6842 6822 6802 6797 6745 6725 6705
 14502 6843 6823 6803 SW 144 TERR
 6864 6844 6840 6804 SW 145 ST
 6785 6745 6725 6701
 SW 146 ST

6750 6740 6730 6720
 14200 14205
 14245 14240
 14300 14200
 6865 6895 6845 6801 14305 6725 6707
 6767
 6760 6740 6720 6700
 6797 6745 6725 6705
 6760 6740 6720 6700
 6785 6745 6725 6701

MITCHELL DR
 6760 6740 6720 6700
 6797 6745 6725 6705
 6760 6740 6720 6700
 6785 6745 6725 6701

6525
 6670
 6695 15222
 15354 6702
 6702 6702 6702

6755 6670 6670
 15225 6770 6750 6740 6730
 15353 6771 6767 6763 6730
 6695 15222
 15354 6702
 15354 6702
 6702 6702 6702

6750 6740 6730 6720
 14200 14205
 14245 14240
 14300 14200
 6865 6895 6845 6801 14305 6725 6707
 6767
 6760 6740 6720 6700
 6797 6745 6725 6705
 6760 6740 6720 6700
 6785 6745 6725 6701