



# SMART PLAN

## South Dade Transitway Corridor

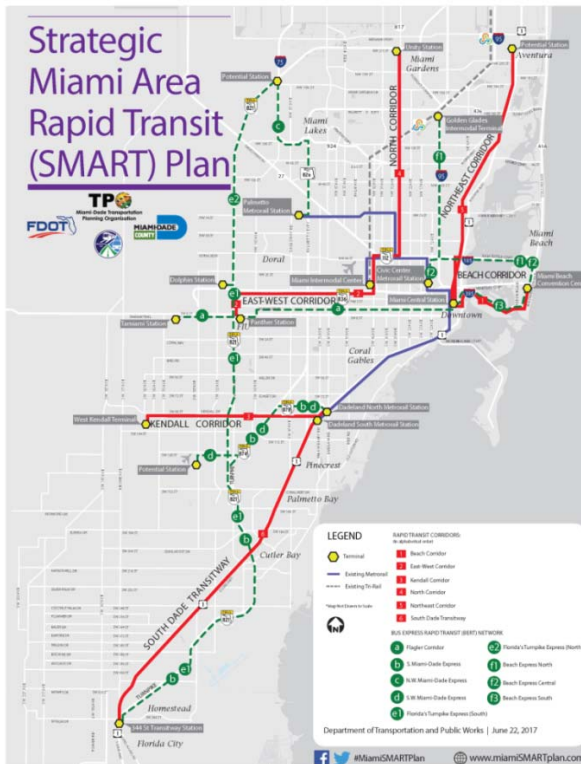
Village of Palmetto Bay Council Presentation  
November 15, 2017



Miami-Dade Transportation  
Planning Organization



# SMART PLAN



SMART Plan adopted on April 21, 2016

Includes 6 major rapid transit corridors and a Bus Express Rapid Transit Network (9 routes)

## SOUTH DADE TRANSITWAY CORRIDOR

- The South Dade Transitway currently operates the only dedicated busway in Miami-Dade County
- Approximate distance of 20 miles spanning from SW 344<sup>th</sup> Street to the Dadeland South Metrorail Station
- Approximately 20,000 parcels are being reviewed

South Dade Transitway Corridor



# SOUTH DADE TRANSITWAY CORRIDOR

## CONNECTING

UNINCORPORATED MIAMI-DADE COUNTY WITH THE COMMUNITIES OF:

- VILLAGE OF PINECREST
- VILLAGE OF PALMETTO BAY
- TOWN OF CUTLER BAY
- CITY OF HOMESTEAD
- FLORIDA CITY



South Dade Transitway Corridor

**TP**  
Miami-Dade Transportation  
Planning Organization

**South Dade**  
TRANSITWAY CORRIDOR

# LAND USE SCENARIO AND VISIONING PLANNING

## Purpose

- Develop Land Use Scenarios to support the South Dade Transitway Corridor of the SMART Plan
- Provide the technical basis for development of transit supportive land uses – whatever the final Alternative is we need to make sure we can provide the development (residential and employment centers) to support it
- Facilitate the movement of passengers throughout the Region



South Dade Transitway Corridor

# HOW DO WE GET THERE?

## Study Advisory Committee was Created

- Each Municipality is represented along with others
  - Will meet multiple times throughout life of project
- Review parcel data
- Review and Approve Land Use Strategies
- Provide the technical basis for development of transit supportive land uses
- Develop Land Use Scenarios to support the South Dade Transitway Corridor. Review and approve distinct scenarios for testing
- Approve final recommended scenario

South Dade Transitway Corridor



# REDEVELOPMENT SUITABILITY SCORE

## How its Done

- Single Numerical Score that reflects a parcel's suitability for development/redevelopment.
- Composed of five scores on parcels, attributes connected to redevelopment suitability.
- Assigns relative weights for each of the five components.



South Dade Transitway Corridor

# REDEVELOPMENT SUITABILITY SCORE

## Score Components and Weights

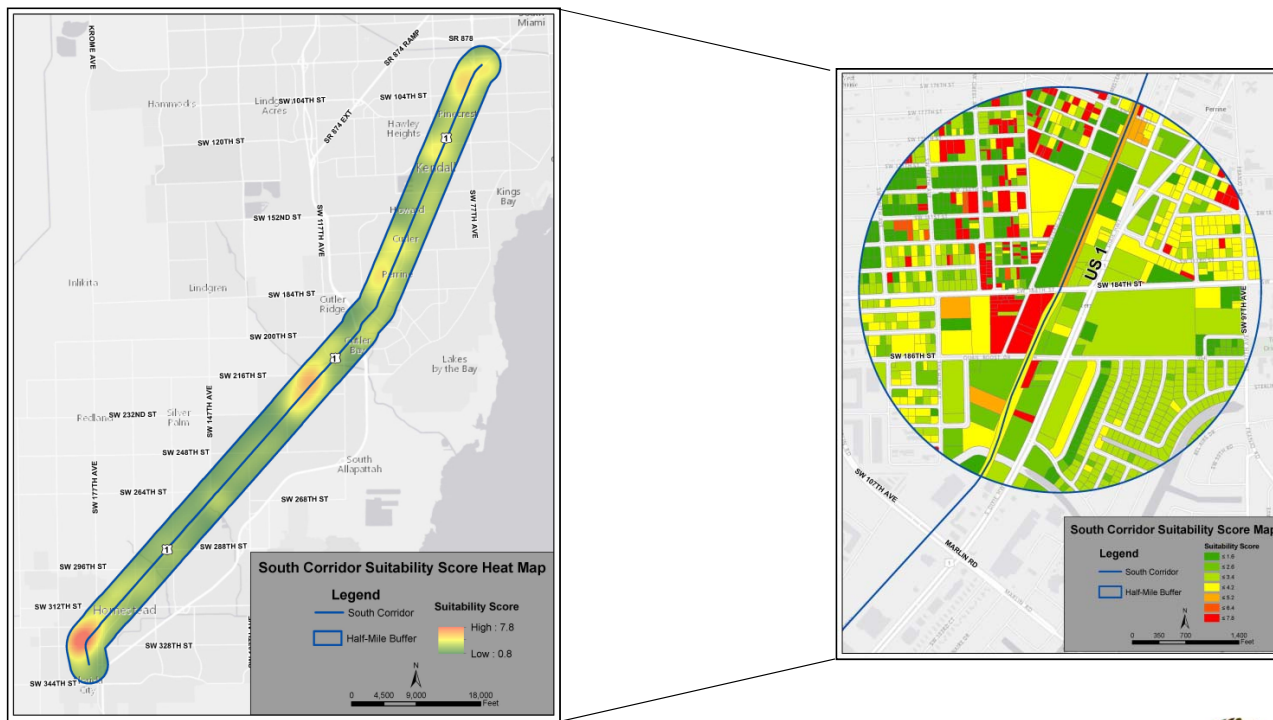
WEIGHTS	
Component	Weight
Land Use	0.2
Vacant	0.2
Year Built	0.2
Improvement Ratio	0.2
RFAR	0.2

South Dade Transitway Corridor



# SUITABILITY SCORING OVERVIEW

## 184<sup>th</sup> Street Area Parcel Assessment



South Dade Transitway Corridor



# SUITABILITY SCORING OVERVIEW

## 184<sup>th</sup> Street Area Suitability Score

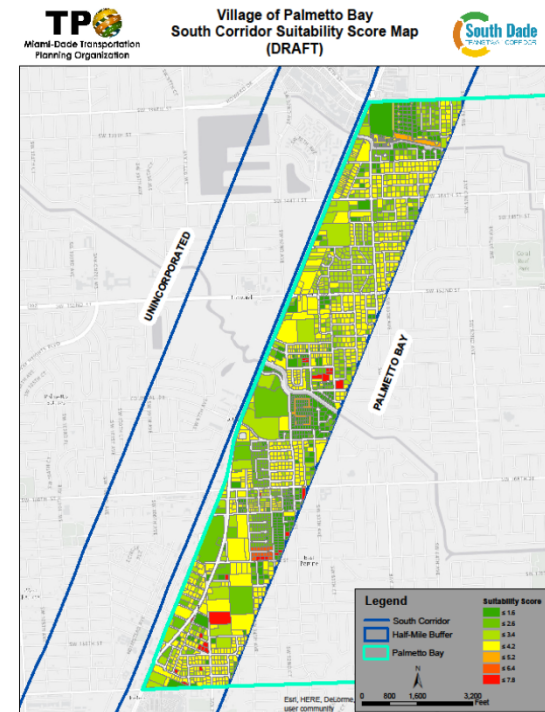


South Dade Transitway Corridor



# SUITABILITY SCORING OVERVIEW

Each Municipality and Miami-Dade County have Received Maps to Review Parcel Conditions for Suitability Accuracy



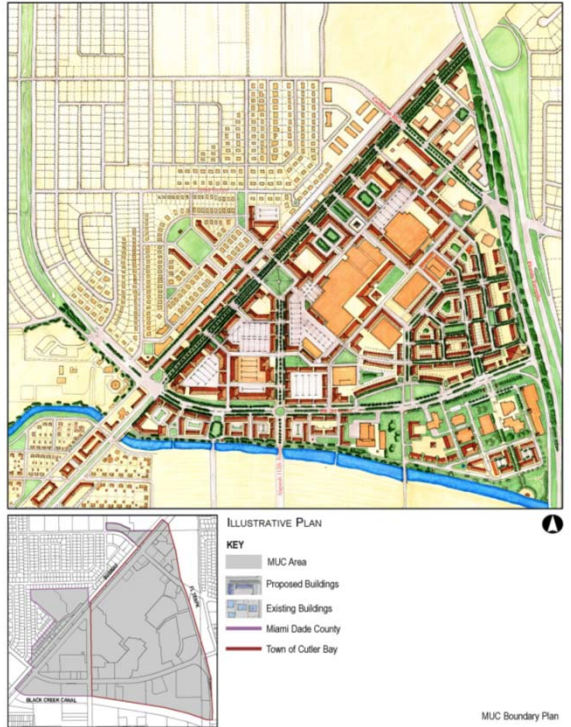
South Dade Transitway Corridor

# LITERATURE REVIEW

## What has been done before?

### Previous Plans/Charrettes:

- Cutler Ridge September 2002
- Downtown Kendall June 1998 (Built)
- East Kendall June 2008
- Goulds 1999
- Leisure City October 2004
- Naranja August 2001
- Perrine January 2003
- Princeton June 2003
- Pinecrest Parkway (US1) Vision Plan October 2012
- Palmetto Bay Franjo Triangle & US1
- Literature Review of Transit Studies - Multiple
- First/Last Mile Study (Ongoing)

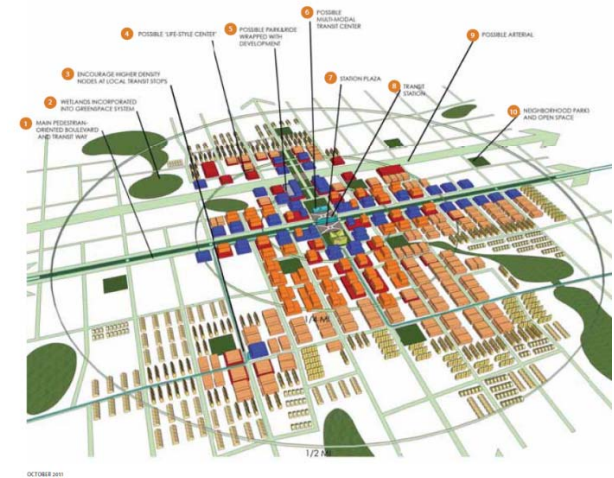


## South Dade Transitway Corridor



# TESTING AND RIDERSHIP FORECASTING

- Evaluate land use scenarios developed through Charrettes and Study Advisory Committee direction
- Model land use scenarios using 3-D tool
- Generate transit ridership estimates based on the land use scenarios



*Station area vision will shape development pattern and transit ridership potential*

South Dade Transitway Corridor

# VISIONING AND CHARRETTE: THE PROCESS

DESIGNING IN PUBLIC



Hands-on Activities Planned for December

South Dade Transitway Corridor



# VISIONING AND CHARRETTE: THE PROCESS

DESIGNING IN PUBLIC



Visioning

South Dade Transitway Corridor



# VISIONING AND CHARRETTEs: THE PROCESS

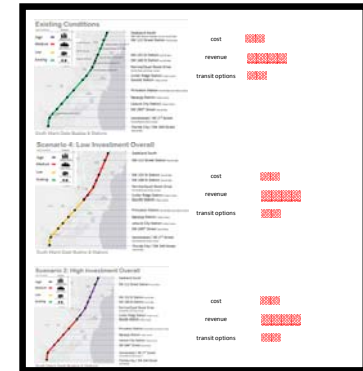
**ONE WORD** that comes to mind about **SOUTH CORRIDOR**:

NOW: \_\_\_\_\_

IN THE FUTURE: \_\_\_\_\_

*(in my vision)*

One-Word Card



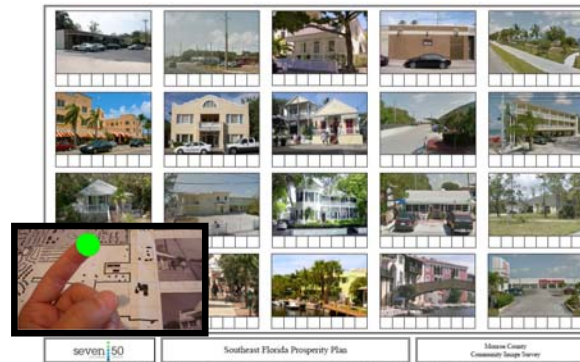
Scenario Planning

Of the many potential goals to pursue, which are **MOST IMPORTANT TO YOU**?

create alternative ways of transportation	add new retail and entertainment along South Corridor	provide better connectivity	reduce vehicle miles traveled and greenhouse gas emissions	add new residents that help support South Corridor businesses
make transit more time-competitive with automobile travel	increase access to the destinations along South Corridor	add new workplaces and services along transit for residents	create walkable and bikeable places	attract more visitors to the South Corridor
Other (add your ideas here):				

SMART PLAN SOUTH CORRIDOR

Goals Poster



Community Image Survey

**SMART PLAN SOUTH CORRIDOR**

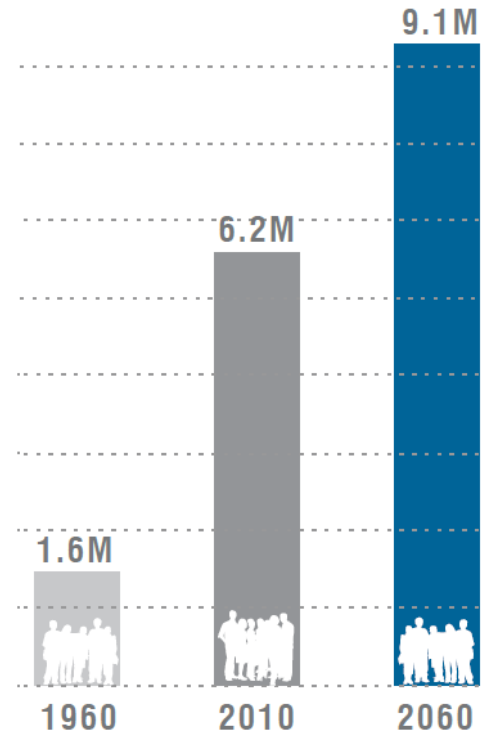
Of the many ideas discussed, which are most exciting to you?

What questions or suggestions do you have?

Detailed Surveys

# VISIONING AND CHARRETTEs: THE CHALLENGE IN SOUTH FLORIDA

**3** MILLION  
MORE  
PEOPLE BY  
**2060**

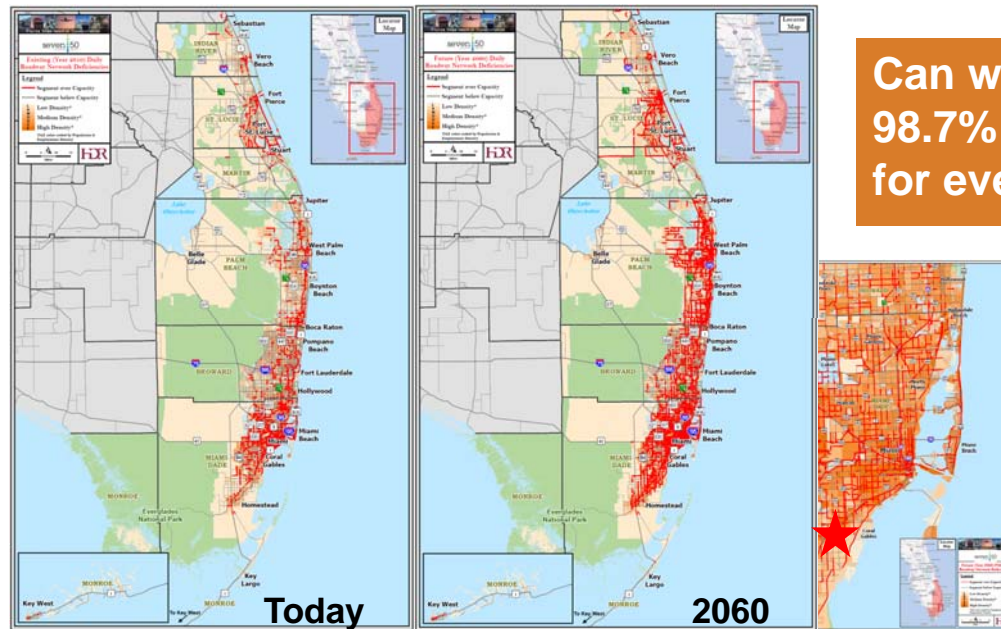


South Dade Transitway Corridor



# VISIONING AND CHARRETTE: TRAFFIC

## Anticipated Future Roadway Deficiencies If Current Trends Continue....



Can we afford to have 98.7% of people driving for every trip?

South Dade Transitway Corridor



# VISIONING AND CHARRETTES: TRAFFIC

## Families Are Spending A Lot To Commute

- Just about everyone in the South Corridor commutes to work over 30 minutes (83%)
- South Corridor residents (living from Florida City to Dadeland South) have the **least number** of transit commuters in Miami Dade County: 1.1%
- South Corridor residents have the **lowest number** of commuters who walk or bike in Miami Dade County: 0.4%
- South Corridor residents **pay 32% of household income** (\$64,166 median household per year) in driving costs. Driving costs are affordable at 15%.
- Families decrease driving costs by biking, walking, or using transit more.

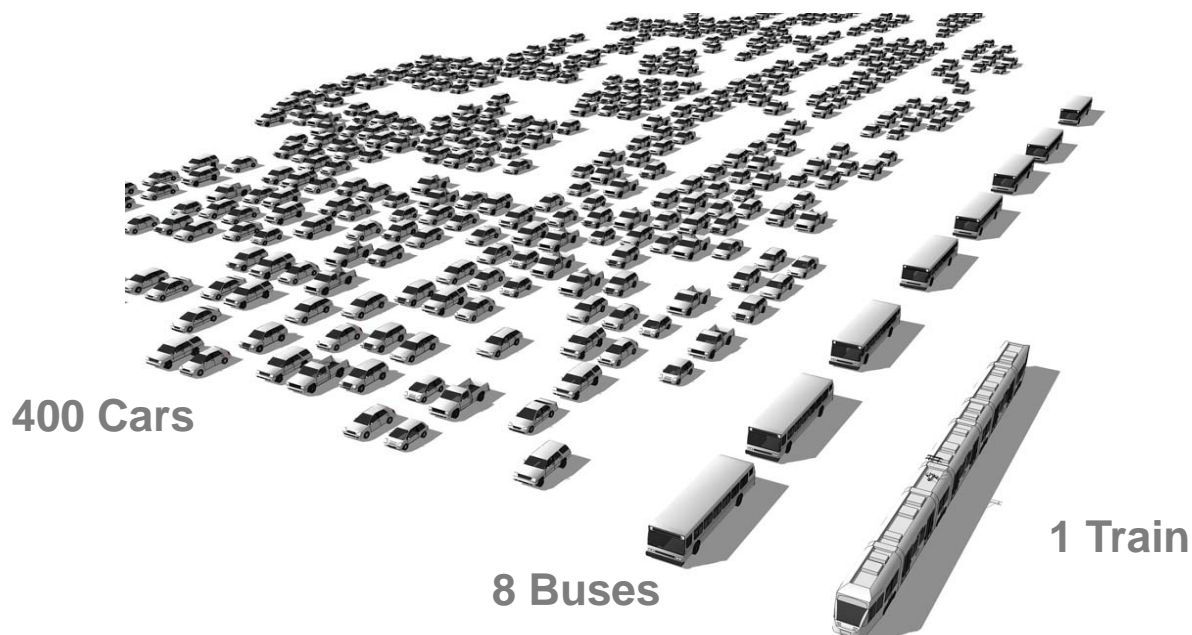
South Dade Transitway Corridor



# VISIONING AND CHARRETTE: TRAFFIC

## Reduce Traffic

400 Cars = 8 Buses = 1 Train



South Dade Transitway Corridor

## MULTI-MEDIA COMMUNICATIONS

### Messaging and Public Relations Outreach We Need Your Help to Get the Word Out

The hyper-local messaging and public relations outreach program is designed to increase public awareness and maximize attendance for the SMART Plan charrette series for the South Dade Transitway Corridor across a broad section of stakeholders.

Communication strategies and tactics involve:

- Print Media
- Social Media
- Email Communications

South Dade Transitway Corridor



# UPCOMING EVENTS

## SAVE THE DATES

### South Corridor

#### Saturday

December 2, 2017  
 9:00 AM – 1:00 PM Two 2 hour Sessions  
 Town of Cutler Bay Town Hall  
 10720 Caribbean Boulevard, 6<sup>th</sup> Floor  
 Cutler Bay, FL 33189

#### Thursday

December 14, 2017  
 6:00 PM – 8:00 PM  
 City of Homestead City Hall  
 100 Civic Court  
 Homestead, FL 33030

#### Wednesday

December 6, 2017  
 6:00 PM – 8:00 PM  
 Village of Pinecrest  
 Evelyn Greer Park Meeting Room  
 8200 SW 124<sup>th</sup> Street  
 Pinecrest, FL 33156

For more information please contact:  
 Alex David, Consultant Team Co-Manager  
 at 786.485.5192 or  
 ADavid@CGASolutions.com



TPO Project Manager

**Jeannine Gaslonde**

(305) 375-1739

Jeannine.Gaslonde@miamidade.gov

CGA Project Manager

**Eric Czerniejewski, P.E., ENV SP**

(954) 766-2735

ECzerniejewski@cgasolutions.com

CGA Project Manager

**Alex A. David, AICP**

(786) 485-5192

ADavid@cgasolutions.com

# THANK YOU

## Any Questions?

[www.miamiSMARTplan.com](http://www.miamiSMARTplan.com)



#MiamiSMARTPlan

South Dade Transitway Corridor

